



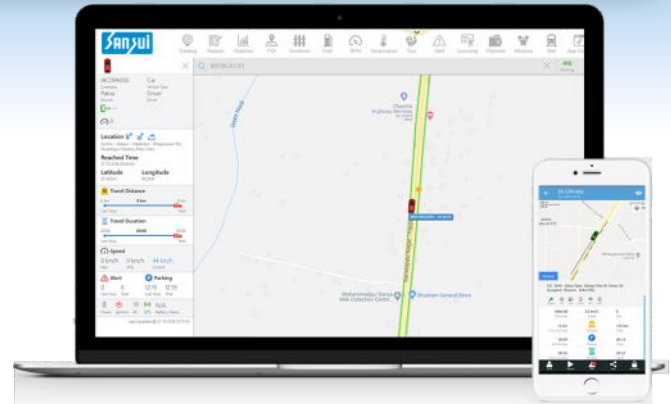
Sansui VTS-SAN-01 Device

Certified as per AIS-140 Standard by ARAI and IRNSS

Made for:

- State Transport, Private Bus Operators
- Rental Car, Cab and Taxi Operators
- School, Colleges Bus Operators

Certified by



Sansui VTS-SAN-01 is GPS Tracker device which is used for various purposes. It consists of locating the exact position of the vehicle, time, speed, distance, covered by the vehicle. The details present in the dashboard like ignition, battery power can be monitored via mobile application or through the provided website. The client will get the details via Specified no./ and email IDs.

Sansui VTS-SAN-01 Unique Features

- GPS Tracker Approved: With IRNSS and Automotive Industry Standard, AIS-140 Compliant Hardware and Communication Protocols.
- Alerts Fitment: LED indication for Power On status of panic button
- GPS Parameters: Track location, time, speed, distance, ignition status
- FOTA-Firmware Over the Air: Configuration through SMS, USB and GPRS
- Motion Accelerometer: Hard Braking, Rash/Sharp Turn, Hard Acceleration, Overspeed Tampering, Vehicle Immobilization.

Sansui VTS-SAN-01 Features

- Over-Speed Indicator : Send alerts when drivers exceed speed
- Anti-Theft Alerts : Any efforts to tamper the power supply will be informed.
- Live Tracking : Live track fleets and trace back facility to draw the route.
- Flash Memory : Stored in memory in no network coverage zone.
- Battery Backup : Long battery backup-up to 6-8Hrs

Sansui VTS-SAN-01 Device Technical Specifications

- GSM Module : Quad Band GSM 850/900/1800/1900Mhz
- DCS GPRS: Class10 Coding Scheme CS1 to Cs4
- Communication Interface : TCP/IP on GPRS
- GPS chipset : MTK high sensitivity chip
- Frequency : L1, 1575.42 MHz C/A code
- GPS : Channel 66
- TTFF (open sky) : Avg. hot start <1sec / cold start <35sec
- Internal Battery : 700mAh/3.7 V LI-ION Battery
- Voltage : 9-36V/40mA(12VDC), 24mA (24VDC)
- Operating Temperature : -20°C to +60°C Degree Celsius
- Motion Sensor : 3 Axis accelerometer and 1 Axis Gyro meter

How Sansui VTS-SAN-01 Device works

- GPS Tracking Device is fitted in the vehicle.
- The device captures GPS information and vehicle information and transmit at regular intervals to the central server.
- GPS Tracking Server receives the data from the tracking devices and stores the data in the server.
- The server will then serve this information to the User Interface.
- User Interface is the software application which enables viewing of vehicle data.
- Sansui VTS-SAN-01 Device combines the use of automatic vehicle location with a software that collects these data for a comprehensive picture of the vehicle location.
- Sansui VTS-SAN-01 Device works on a GPS-GSM architecture and the features include large flash memory.
- In Vehicle Monitoring System (IVMS), Remote logs reading, precise online tracking, remote monitoring, over speed warning etc.



Emergency Button



Driver Behaviour



Water & Dust Proof



Immobilizer



Fuel Monitoring



CAN Support



AC on/off



RFID Reader



Door Open/Close



Live Video Steaming*



IP Camera Support*



SANSUI ELECTRONICS PVT. LTD.

E-59, Marketyard, Gultekdi, Pune - 411 037
Maharashtra, India
Mobile : 98238 88888 / 88066 66092
Support : 97644 51000 / 97644 91000
Email : sales@sansui.co.in
Website : sansuiscales.com



- Pune ● Mumbai ● Navi Mumbai ● Kolhapur ● Nashik ● Delhi ● Parwanoo ● Kolkata ● Bhubaneshwar ● Indore ● Ludhiana ● Bhopal ● Hyderabad ● Bengaluru ● Chennai ●